



COMPANY INFORMATION

HRC Europe NL B.V.
Mortelstraat 7
8211 AD
Lelystad
Netherlands

office@hrc-europe.nl
<https://www.hrc-europe.nl>

MRPI® REGISTRATION

1.1.01119.2026

DATE OF THIS ISSUE

8-3-2026

EXPIRY DATE

8-3-2031

SCOPE OF DECLARATION

This MRPI®-EPD certificate is verified by M. van Leeuwen, Nibe. The LCA study has been done by A.K. Jeeninga, Advieslab v.o.f.. The certificate is based on an LCA-dossier according to EN15804+A2. It is verified according to the 'Verification protocol for MRPI LCA project report & EPD 21th of May 2025, V. 5.2'. EPDs of construction products may not be comparable if they do not comply with EN15804+A2. Declaration of SVHC that are listed on the 'Candidate list of Substances of Very High Concern for authorisation' when content exceeds the limits for registration with ECHA.

PROGRAM OPERATOR

Stichting MRPI®
Kingsfordweg 151
1043 GR
Amsterdam

PRODUCT

HRC 100, 200, 400 and 700 Series: Headed reinforcement, Rebar with mechanical couplers, Cast-in connections.

DECLARED UNIT / FUNCTIONAL UNIT

1 Mass (kg)

DESCRIPTION OF PRODUCT

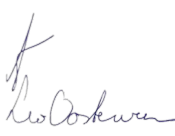

Reinforcing steel bars with a component attached to one or both ends. End components are made of steel and connected to the rebar by a thermo-mechanical process, in the solid phase - without any additives. Various HRC components can be combined. The finished product is cut and bend according to project specification.

VISUAL PRODUCT



MORE INFORMATION

<https://www.hrc-europe.nl>

<p>Ing. L. L. Oosterveen MSc. MBA Managing Director MRPI</p>	<p>DEMONSTRATION OF VERIFICATION</p>
	<p>CEN standard EN15804 serves as the core PCR [1]</p>
	<p>Independent verification of the declaration and data according to EN15804+A2</p> <p>Internal: External: X</p>
	<p>Third party verifier: M. van Leeuwen, Nibe</p> 
	<p>[1] PCR = Product Category Rules</p>





DETAILED PRODUCT DESCRIPTION

The rebar is cut to length according to the production order. Small, unusable cut-off lengths are collected for recycling. The raw material for end-components is cut to a correct length/geometry. The cutting is done by band-saw. The threaded components (rebar couplers and cast-in connections) are processed by CNC-machines. Small, unusable cut-off lengths and swarf from cutting and machining are collected for recycling. Next, the end components are attached to the rebar by friction welding. Friction welding is a thermos-mechanical process, much like forging. The materials that are welded remain in the solid phase, no liquation or melting occurs during the process. The process uses no additional material or consumables. If required, during production, the products are also bent by a rebar bending machine. The finished product HRC100, 200, 400, 700 series consist of: Headed reinforcement, Rebar with mechanical couplers, Cast-in connections. RSL is 100 years.

The different products are HRC100, HRC200 series: Headed reinforcement bars, providing mechanical anchorage and replacing anchorage lengths, bends and hooks. HRC400 series: Rebar with couplers for mechanical splicing of reinforcement bars. HRC700 series: Rebar with a threaded component for connection of steel components to a concrete structure. The average composition includes: rebar-89,4%, HRC100-series-9,52%, HRC200 and 700 series-0,43%, HRC400-series-0,62%.

Component (> 1%)	(kg / %)
Steel	1

SCOPE AND TYPE

Production site is Lelystad (Netherlands). End of life scenarios are based on the NMD (Dutch Determination Method). LCA method: NMD Determination method v 1.2 | Set 2

LCA software*: Simapro 9.6

LCA database profiles: ecoinvent 3.9.1 E.F.3.1

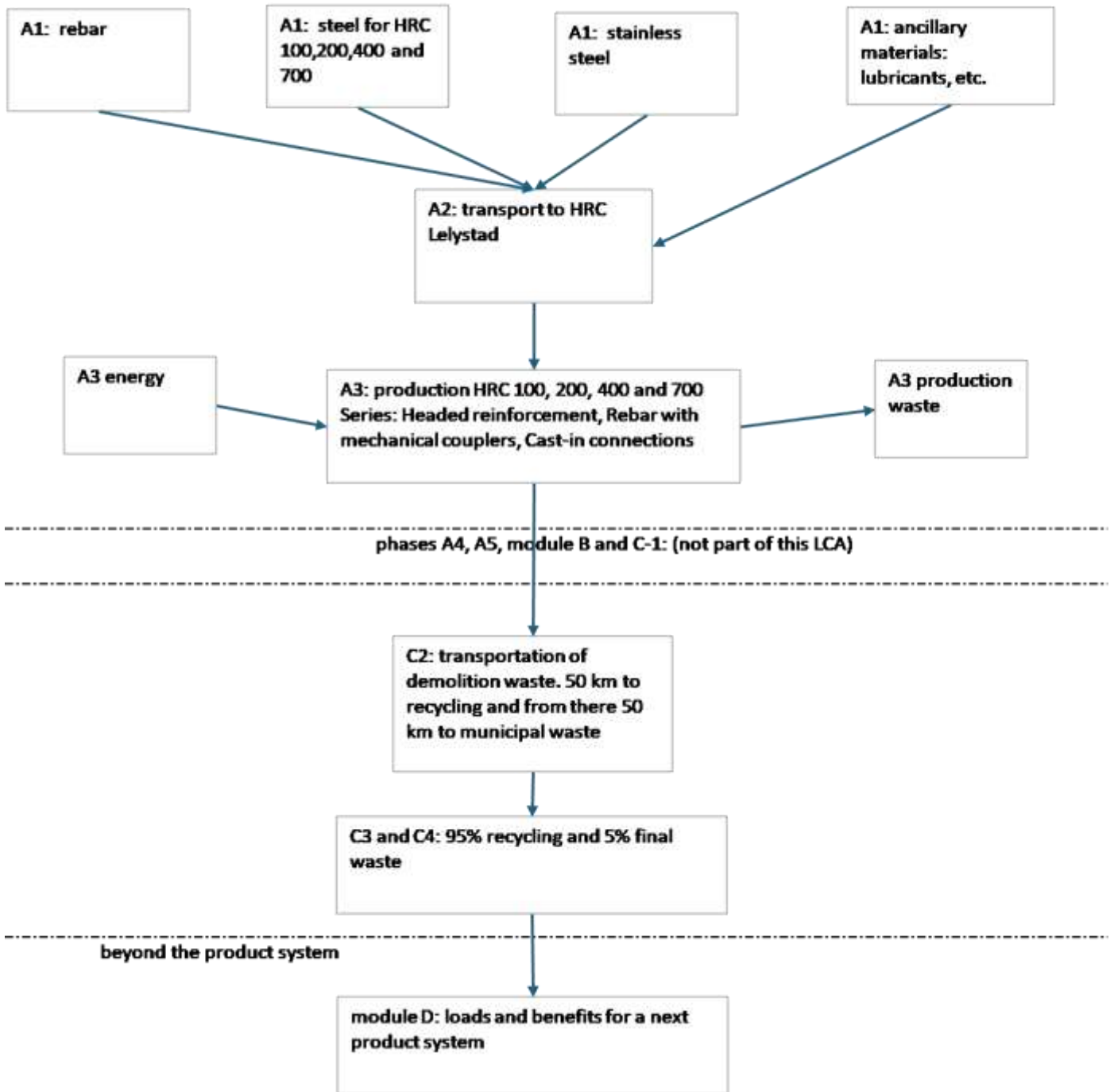
This LCA covers an average composition of parts (% mass per kg composition), related to the production in 2022, 2023 and 2024.

PRODUCT STAGE			CONSTRUCTION PROCESS STAGE		USE STAGE							END OF LIFE STAGE				BENEFITS AND LOADS BEYOND THE SYSTEM BOUNDARIES
Raw material supply	Transport	Manufacturing	Transport gate to site	Assembly	Use	Maintenance	Repair	Replacement	Refurbishment	Operational energy use	Operational water use	De-construction demolition	Transport	Waste processing	Disposal	Reuse - Recovery - Recycling potential
A1	A2	A3	A4	A5	B1	B2	B3	B4	B5	B6	B7	C1	C2	C3	C4	D
x	x	x	ND	ND	ND	ND	ND	ND	ND	ND	ND	ND	x	x	x	x

X = Modules Assessed

ND = Not Declared





REPRESENTATIVENESS

This EPD is representative for HRC 100, 200, 400 and 700 Series. Headed reinforcement, Rebar with mechanical couplers, Cast-in connections. A product of HRC Europe NL B.V. The results of this EPD are representative for the Netherlands (Europe).





ENVIRONMENTAL IMPACT per functional unit or declared unit (core indicators A2)

	Unit	A1	A2	A3	A1-A3	A4	A5	B1	B2	B3	B4	B5	B6	B7	C1	C2	C3	C4	D
GWP-total	kg CO2 eq.	1,17E+00	2,68E-02	1,70E-01	1,37E+00	0,00E+00	0,00E+00	0,00E+00	0,00E+00	0,00E+00	0,00E+00	0,00E+00	0,00E+00	0,00E+00	0,00E+00	7,75E-03	1,16E-07	3,00E-04	-1,48E-01
GWP-fossil	kg CO2 eq.	1,16E+00	2,67E-02	1,70E-01	1,36E+00	0,00E+00	0,00E+00	0,00E+00	0,00E+00	0,00E+00	0,00E+00	0,00E+00	0,00E+00	0,00E+00	0,00E+00	7,72E-03	1,16E-07	3,00E-04	-1,48E-01
GWP-biogenic	kg CO2 eq.	4,78E-03	5,03E-05	3,52E-04	5,18E-03	0,00E+00	0,00E+00	0,00E+00	0,00E+00	0,00E+00	0,00E+00	0,00E+00	0,00E+00	0,00E+00	0,00E+00	2,57E-06	2,06E-10	1,36E-07	3,72E-04
GWP-luluc	kg CO2 eq.	1,24E-03	1,24E-05	1,04E-04	1,36E-03	0,00E+00	0,00E+00	0,00E+00	0,00E+00	0,00E+00	0,00E+00	0,00E+00	0,00E+00	0,00E+00	0,00E+00	2,52E-05	6,84E-11	1,72E-07	5,42E-05
ODP	kg CFC11 eq.	6,59E-08	5,69E-10	6,86E-09	7,33E-08	0,00E+00	0,00E+00	0,00E+00	0,00E+00	0,00E+00	0,00E+00	0,00E+00	0,00E+00	0,00E+00	0,00E+00	2,85E-10	0,00E+00	1,91E-11	-5,88E-09
AP	mol H+ eq.	5,65E-03	8,77E-05	6,31E-04	6,37E-03	0,00E+00	0,00E+00	0,00E+00	0,00E+00	0,00E+00	0,00E+00	0,00E+00	0,00E+00	0,00E+00	0,00E+00	3,77E-05	6,00E-10	2,31E-06	-4,00E-04
EP-fresh water	kg P eq.	6,12E-05	2,11E-07	7,86E-06	6,93E-05	0,00E+00	0,00E+00	0,00E+00	0,00E+00	0,00E+00	0,00E+00	0,00E+00	0,00E+00	0,00E+00	0,00E+00	7,69E-08	2,22E-12	2,96E-09	1,50E-05
EP-marine	kg N eq.	1,22E-03	3,00E-05	1,49E-04	1,40E-03	0,00E+00	0,00E+00	0,00E+00	0,00E+00	0,00E+00	0,00E+00	0,00E+00	0,00E+00	0,00E+00	0,00E+00	1,42E-05	2,06E-10	8,73E-07	-7,00E-05
EP-terrestrial	mol N eq.	1,35E-02	3,21E-04	1,72E-03	1,56E-02	0,00E+00	0,00E+00	0,00E+00	0,00E+00	0,00E+00	0,00E+00	0,00E+00	0,00E+00	0,00E+00	0,00E+00	1,52E-04	2,24E-09	9,43E-06	-1,44E-03
POCP	kg NMVOC eq.	5,50E-03	1,37E-04	5,47E-04	6,18E-03	0,00E+00	0,00E+00	0,00E+00	0,00E+00	0,00E+00	0,00E+00	0,00E+00	0,00E+00	0,00E+00	0,00E+00	5,10E-05	8,49E-10	3,23E-06	-1,06E-03
ADP-minerals & metals	kg Sb eq.	8,01E-06	7,03E-08	1,52E-06	9,60E-06	0,00E+00	0,00E+00	0,00E+00	0,00E+00	0,00E+00	0,00E+00	0,00E+00	0,00E+00	0,00E+00	0,00E+00	4,04E-08	3,00E-13	6,27E-10	5,01E-07
ADP-fossil	MJ, net calorific value	1,53E+01	3,81E-01	2,28E+00	1,80E+01	0,00E+00	0,00E+00	0,00E+00	0,00E+00	0,00E+00	0,00E+00	0,00E+00	0,00E+00	0,00E+00	0,00E+00	1,11E-01	1,94E-06	7,55E-03	-1,28E+00
WDP	m3 world eq. Deprived	5,09E-01	1,79E-03	2,95E-02	5,41E-01	0,00E+00	0,00E+00	0,00E+00	0,00E+00	0,00E+00	0,00E+00	0,00E+00	0,00E+00	0,00E+00	0,00E+00	5,86E-04	-1,29E-07	3,34E-04	-2,31E-01

- GWP-total = Global Warming Potential total
- GWP-fossil = Global Warming Potential fossil fuels
- GWP-biogenic = Global Warming Potential biogenictotal
- GWP-luluc = Global Warming Potential land use and land use change
- ODP = Depletion potential of the stratospheric ozone layer
- AP = Acidification Potential, Accumulated Exceedence
- EP-freshwater = Eutrophication Potential, fraction of nutrients reaching freshwater end compartment
- EP-marine = Eutrophication Potential, fraction of nutrients reaching marine end compartment
- EP-terrestrial = Eutrophication Potential, Accumulated Exceedence
- POCP = Formation potential of tropospheric ozone photochemical oxidants
- ADP-minerals & metals = Abiotic Depletion Potential for non-fossil resources [1]
- ADP-fossil = Abiotic Depletion for fossil resources potential [1]
- WDP = Water (user) deprivation potential, deprivation-weighted water consumption [1]

Disclaimer [1]:

- The results of this environmental impact indicator shall be used with care as the uncertainties on these results are high or as there is limited experience with the indicator.





ENVIRONMENTAL IMPACT per functional unit or declared unit (additional indicators A2)

Unit		A1	A2	A3	A1-A3	A4	A5	B1	B2	B3	B4	B5	B6	B7	C1	C2	C3	C4	D
PM	Disease incidence	1,19E-07	2,02E-09	8,27E-09	1,29E-07	0,00E+00	0,00E+00	0,00E+00	0,00E+00	0,00E+00	0,00E+00	0,00E+00	0,00E+00	0,00E+00	0,00E+00	7,56E-10	3,00E-14	4,99E-11	-1,49E-08
IRP	kBq U235 eq.	5,00E-02	1,83E-04	3,23E-03	5,34E-02	0,00E+00	0,00E+00	0,00E+00	0,00E+00	0,00E+00	0,00E+00	0,00E+00	0,00E+00	0,00E+00	0,00E+00	8,52E-05	9,43E-10	4,91E-06	2,67E-03
ETP-fw	CTUe	1,48E+01	1,99E-01	1,19E+00	1,62E+01	0,00E+00	0,00E+00	0,00E+00	0,00E+00	0,00E+00	0,00E+00	0,00E+00	0,00E+00	0,00E+00	0,00E+00	8,37E-02	3,10E-06	3,76E-03	2,23E+00
HTP-c	CTUh	1,26E-08	1,13E-11	7,67E-10	1,34E-08	0,00E+00	0,00E+00	0,00E+00	0,00E+00	0,00E+00	0,00E+00	0,00E+00	0,00E+00	0,00E+00	0,00E+00	4,02E-12	0,00E+00	1,30E-13	1,96E-09
HTP-nc	CTUh	2,46E-07	3,55E-10	1,45E-08	2,61E-07	0,00E+00	0,00E+00	0,00E+00	0,00E+00	0,00E+00	0,00E+00	0,00E+00	0,00E+00	0,00E+00	0,00E+00	9,12E-11	0,00E+00	1,81E-12	1,31E-08
SQP	-	4,33E+00	3,87E-01	1,49E+00	6,22E+00	0,00E+00	0,00E+00	0,00E+00	0,00E+00	0,00E+00	0,00E+00	0,00E+00	0,00E+00	0,00E+00	0,00E+00	8,86E-02	2,47E-06	1,51E-02	-2,01E-01

- PM = Potential incidence of disease due to PM emissions
- IRP = Potential Human exposure efficiency relative to U235 [1]
- ETP-fw = Potential Comparative Toxic Unit for ecosystems [2]
- HTP-c = Potential Comparative Toxic Unit for humans, cancer [2]
- HTP-nc = Potential Comparative Toxic Unit for humans, non-cancer [2]
- SQP = Potential soil quality index [2]

Disclaimer [1]:

- This impact category deals mainly with the eventual impact of low dose ionizing radiation on human health of the nuclear fuel cycle. It does not consider effects due to possible nuclear accidents, occupational exposure nor due to radioactive waste.

Disclaimer [2]:

- The results of this environmental impact indicator shall be used with care as the uncertainties on these results are high or as there is limited experience with the indicator.





OUTPUT FLOWS AND WASTE CATEGORIES per functional unit or declared unit (A1 en A2)

	Unit	A1	A2	A3	A1-A3	A4	A5	B1	B2	B3	B4	B5	B6	B7	C1	C2	C3	C4	D
HWD	kg	6,28E-05	2,37E-06	7,33E-05	1,38E-04	0,00E+00	0,00E+00	0,00E+00	0,00E+00	0,00E+00	0,00E+00	0,00E+00	0,00E+00	0,00E+00	0,00E+00	6,66E-07	1,05E-11	3,71E-08	-2,86E-05
NHWD	kg	3,60E-01	3,34E-02	3,04E-02	4,24E-01	0,00E+00	0,00E+00	0,00E+00	0,00E+00	0,00E+00	0,00E+00	0,00E+00	0,00E+00	0,00E+00	0,00E+00	7,31E-03	1,01E-05	5,00E-02	4,02E-02
RWD	kg	4,24E-05	1,16E-07	2,63E-06	4,51E-05	0,00E+00	0,00E+00	0,00E+00	0,00E+00	0,00E+00	0,00E+00	0,00E+00	0,00E+00	0,00E+00	0,00E+00	9,52E-08	5,90E-13	5,98E-09	1,87E-06
CRU	kg	2,57E-02	0,00E+00	1,28E-03	2,69E-02	0,00E+00	0,00E+00	0,00E+00	0,00E+00	0,00E+00	0,00E+00	0,00E+00	0,00E+00	0,00E+00	0,00E+00	0,00E+00	0,00E+00	0,00E+00	0,00E+00
MFR	kg	1,11E-02	0,00E+00	4,81E-02	5,92E-02	0,00E+00	0,00E+00	0,00E+00	0,00E+00	0,00E+00	0,00E+00	0,00E+00	0,00E+00	0,00E+00	0,00E+00	0,00E+00	0,00E+00	9,50E-01	0,00E+00
MER	kg	0,00E+00	0,00E+00	0,00E+00	0,00E+00	0,00E+00	0,00E+00	0,00E+00	0,00E+00	0,00E+00	0,00E+00	0,00E+00	0,00E+00	0,00E+00	0,00E+00	0,00E+00	0,00E+00	0,00E+00	0,00E+00
EEE	MJ	0,00E+00	0,00E+00	3,98E-04	3,98E-04	0,00E+00	0,00E+00	0,00E+00	0,00E+00	0,00E+00	0,00E+00	0,00E+00	0,00E+00	0,00E+00	0,00E+00	0,00E+00	0,00E+00	0,00E+00	0,00E+00
ETE	MJ	0,00E+00	0,00E+00	6,85E-04	6,85E-04	0,00E+00	0,00E+00	0,00E+00	0,00E+00	0,00E+00	0,00E+00	0,00E+00	0,00E+00	0,00E+00	0,00E+00	0,00E+00	0,00E+00	0,00E+00	0,00E+00

- HWD = Hazardous Waste Disposed
- NHWD = Non Hazardous Waste Disposed
- RWD = Radioactive Waste Disposed
- CRU = Components for reuse
- MFR = Materials for recycling
- MER = Materials for energy recovery
- EEE = Exported Electrical Energy
- ETE = Exported Thermal Energy





RESOURCE USE per functional unit or declared unit (A1 and A2)

	Unit	A1	A2	A3	A1-A3	A4	A5	B1	B2	B3	B4	B5	B6	B7	C1	C2	C3	C4	D
PERE	MJ	1,22E+00	5,58E-03	5,61E-01	1,79E+00	0,00E+00	0,00E+00	0,00E+00	0,00E+00	0,00E+00	0,00E+00	0,00E+00	0,00E+00	0,00E+00	0,00E+00	1,55E-03	3,95E-08	6,38E-05	6,91E-02
PERM	MJ	4,43E-06	0,00E+00	2,21E-07	4,65E-06	0,00E+00	0,00E+00	0,00E+00	0,00E+00	0,00E+00	0,00E+00	0,00E+00	0,00E+00	0,00E+00	0,00E+00	0,00E+00	0,00E+00	0,00E+00	0,00E+00
PERT	MJ	1,22E+00	5,58E-03	5,61E-01	1,79E+00	0,00E+00	0,00E+00	0,00E+00	0,00E+00	0,00E+00	0,00E+00	0,00E+00	0,00E+00	0,00E+00	0,00E+00	1,55E-03	3,95E-08	6,38E-05	6,91E-02
PENRE	MJ	1,59E+01	4,05E-01	2,31E+00	1,86E+01	0,00E+00	0,00E+00	0,00E+00	0,00E+00	0,00E+00	0,00E+00	0,00E+00	0,00E+00	0,00E+00	0,00E+00	1,12E-01	1,94E-06	7,60E-03	-1,28E+00
PENRM	MJ	6,47E-04	0,00E+00	2,24E-03	2,89E-03	0,00E+00	0,00E+00	0,00E+00	0,00E+00	0,00E+00	0,00E+00	0,00E+00	0,00E+00	0,00E+00	0,00E+00	0,00E+00	0,00E+00	0,00E+00	0,00E+00
PENRT	MJ	1,59E+01	4,05E-01	2,31E+00	1,86E+01	0,00E+00	0,00E+00	0,00E+00	0,00E+00	0,00E+00	0,00E+00	0,00E+00	0,00E+00	0,00E+00	0,00E+00	1,12E-01	1,94E-06	7,60E-03	-1,28E+00
SM	kg	8,37E-01	0,00E+00	4,18E-02	8,79E-01	0,00E+00	0,00E+00	0,00E+00	0,00E+00	0,00E+00	0,00E+00	0,00E+00	0,00E+00	0,00E+00	0,00E+00	0,00E+00	0,00E+00	0,00E+00	0,00E+00
RSF	MJ	0,00E+00	0,00E+00	0,00E+00	0,00E+00	0,00E+00	0,00E+00	0,00E+00	0,00E+00	0,00E+00	0,00E+00	0,00E+00	0,00E+00	0,00E+00	0,00E+00	0,00E+00	0,00E+00	0,00E+00	0,00E+00
NSRF	MJ	0,00E+00	0,00E+00	0,00E+00	0,00E+00	0,00E+00	0,00E+00	0,00E+00	0,00E+00	0,00E+00	0,00E+00	0,00E+00	0,00E+00	0,00E+00	0,00E+00	0,00E+00	0,00E+00	0,00E+00	0,00E+00
FW	m3	1,53E-02	5,59E-05	1,50E-03	1,69E-02	0,00E+00	0,00E+00	0,00E+00	0,00E+00	0,00E+00	0,00E+00	0,00E+00	0,00E+00	0,00E+00	0,00E+00	2,55E-05	-2,89E-09	8,02E-06	-4,59E-03

- PERE = Use of renewable primary energy excluding renewable primary energy used as raw materials
- PERM = Use of renewable primary energy resources used as raw materials
- PERT = Total use of renewable primary energy resources
- PENRE = Use of non-renewable primary energy resources excluding non-renewable energy resources used as raw materials
- PENRM = Use of non-renewable primary energy resources used as raw materials
- PENRT = Total use of non-renewable primary energy resources
- SM = Use of secondary materials
- RSF = Use of renewable secondary fuels
- NSRF = Use of non-renewable secondary fuels
- FW = Use of net fresh water

BIOGENIC CARBON CONTENT per functional unit or declared unit (A1 and A2)

	Unit	A1	A2	A3	A1-A3	A4	A5	B1	B2	B3	B4	B5	B6	B7	C1	C2	C3	C4	D
BBCpr	kg C	0,00E+00	0,00E+00	0,00E+00	0,00E+00	0,00E+00	0,00E+00	0,00E+00	0,00E+00	0,00E+00	0,00E+00	0,00E+00	0,00E+00	0,00E+00	0,00E+00	0,00E+00	0,00E+00	0,00E+00	0,00E+00
BCCpa	kg C	0,00E+00	0,00E+00	0,00E+00	0,00E+00	0,00E+00	0,00E+00	0,00E+00	0,00E+00	0,00E+00	0,00E+00	0,00E+00	0,00E+00	0,00E+00	0,00E+00	0,00E+00	0,00E+00	0,00E+00	0,00E+00

- BCCpr = Biogenic carbon content in product
- BCCpa = Biogenic carbon content in packaging





CALCULATION RULES

PRODUCT STAGE (A1-A3) All input flows and output flows are considered. The total neglected input flows do therefore not exceed the limit of 5% of energy use and mass. The LCA is based on company data of HRC Europe NL B.V. The Data Collection Period is 2022-2024. The energy use at the plant in Lelystad is allocated at the mass of the production.

END OF LIFE STAGE (C2,C3,C4) All input flows(e.g. energy use for demolition or disassembly, transport to waste processing etc.) and output flows are considered(e.g. end-of-life waste processing of the product, etc.) are considered. The total neglected input flows do therefore not exceed the limit of 5% of energy use and mass. All stages are according to NMD Waste Scenario Steel, reinforcement (NMD ID74).

C-2: transport tot recycling	50 km
C-2: transport from recycling to dumpsite (final waste)	50 km
C-3: recycling	95%
C-4: final waste	5%

BENEFITS AND LOADS BEYOND THE SYSTEM BOUNDARY All benefits and loads beyond the system boundary resulting from reusable products, recyclable materials and/or useful energy carriers leaving the products systems are considered.

DATA QUALITY The data quality level is very good (acc. to annex E EN 15804)

Geographical representativeness: the LCA is based on company data of HRC, production in Netherlands. the end of life scenario's are based on the NMD Determination Method and thereby representing Netherlands.

Time representativeness: the Data collection period concerns the years 2022-2024.

Technical representativeness: The data collection includes energy use for production, composition of (base) materials and delivered materials by suppliers and represent the actual processes of HRC.

SCENARIOS AND ADDITIONAL TECHNICAL INFORMATION

All products are certified according to national provisions and international standards. HRC100: ISO15698, ETA-08/0035; HRC200: ISO15698, ETA-08/0035; HRC400: ISO15835, ETA-22/0573; HRC700: SINTEF TG 20072. All products are tailor made.

Electricity for production: Electricity, low voltage {NL}| electricity, low voltage, residual mix | Cut-off, U 0,483 kg CO2 equiv. /kWh





DECLARATION OF SVHC

There are no substances of concerns, which appear on the list SVHC (ECHA)

REFERENCES

- ISO 14040
ISO 14040:2006-10, Environmental management - Life cycle assessment - Principles and framework; EN ISO 14040:2006
- ISO 14044
ISO 14044:2006-10, Environmental management - Life cycle assessment - Requirements and guidelines; EN ISO 14044:2006
- ISO 14025
ISO 14025:2011-10, Environmental labels and declarations — Type III environmental declarations — Principles and procedures
- EN 15804+A2
EN 15804:2012+A2:2019/AC:2021, Sustainability of Buildings - Environmental Product Declarations - Framework Development Rules by Product Category
- Ecoinvent
ecoinvent Version 3.9.1, December 2022
- R<THINK characterization method
ecoinvent 3.6: EN 15804+A1 indicators (CML-IA Baseline v3.06), EN 15804+A2 indicators (EF 3.0)
ecoinvent 3.9.1: EN 15804+A1 indicators (CML-IA Baseline v3.09), EN 15804+A2 indicators (EF 3.1)
- Environdec, 27-10-2020, EPD Ovako - Hot-rolled bar steel product in Smedjebacken & Boxholm, Ovako
- Tauw, 20-10-2022, LCA Wapeningsstaal van Holterman Wapeningsstaal bv (A1-A3)
- Foundation MRPI, 29-09-2022: EPD BBC-betonijzerbuigcentrale H.mij b.v.
- Foundation MRPI, 21-07-2021: Wapeningsstaal voor gewapende betonconstructies; EPD VWN- Vereniging Wapeningstaal Nederland: Wapeningstaal voor toepassing in gewapende betonconstructies.

