

MULCOL

FIRE PROTECTION

Environmental Product Declaration

According to EN15804+A2 (+indicators A1)

This declaration is for:
Multicollar slim

Provided by:
Mulcol International



MRPI® registration:
1.1.00583.2024

Program operator:
Stichting MRPI®
Publisher:
Stichting MRPI®
www.mrpi.nl

Date of first issue:
12-7-2024
Date of this issue:
11-6-2026
Expiry date:
12-7-2029



Nationale
MILIEUDATABASE

Page 1 of 10



COMPANY INFORMATION

Mulcol International
 Promenade 75
 5401 GM
 Uden
 Netherlands
 +31 (0) 118726140
 info@mulcol.com
<https://www.mulcol.com/>

MRPI® REGISTRATION

1.1.00583.2024

DATE OF THIS ISSUE

11-6-2026

EXPIRY DATE

12-7-2029

SCOPE OF DECLARATION

This MRPI®-EPD certificate is verified by Anne Kees Jeeninga, Advieslab. The LCA study has been done by Martijn Blaak, EcoReview. The certificate is based on an LCA-dossier according to EN15804+A2 (+indicators A1). It is verified according to the 'Verification protocol for MRPI LCA project report & EPD 21th of May 2025, V. 5.2'. EPDs of construction products may not be comparable if they do not comply with EN15804+A2. Declaration of SVHC that are listed on the 'Candidate list of Substances of Very High Concern for authorisation' when content exceeds the limits for registration with ECHA.

PROGRAM OPERATOR

Stichting MRPI®
 Kingsfordweg 151
 1043 GR
 Amsterdam

PRODUCT

Multicollar slim

DECLARED UNIT / FUNCTIONAL UNIT

1 Piece

DESCRIPTION OF PRODUCT

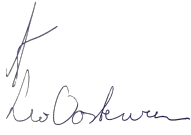

The Multicollar Slim is a fire collar

VISUAL PRODUCT



MORE INFORMATION

<https://www.mulcol.com/multicollar-slim>

<p>Ing. L. L. Oosterveen MSc. MBA Managing Director MRPI</p>	<p>DEMONSTRATION OF VERIFICATION</p>
	<p>CEN standard EN15804 serves as the core PCR [1]</p>
	<p>Independent verification of the declaration and data according to EN15804+A2 (+indicators A1) Internal: External: X</p>
	<p>Third party verifier: Anne Kees Jeeninga, Advieslab</p> 
<p>[1] PCR = Product Category Rules</p>	

DETAILED PRODUCT DESCRIPTION

Multicollar Slim is a 30 mm-high universal fire collar that consists of a stainless steel band made of 174 links and a high-quality inlay on a graphite basis. In order to achieve the desired pipe diameter, the links can easily be separated. In the event of fire, the Multicollar Slim starts foaming and creates a fire-resistant seal to adjacent rooms. In combination with the Multimastic SP sealant, it is also possible to achieve a smoke-proof finish. This fire collar has been extensively tested in Europe in accordance with EN 1366-3. The Multicollar Slim fire collar is a single product for all applications. Thanks to the Multiclips and Multiscrews included in the box, one person can easily install it. The reference service life of Multicollar slim is 30 years.

Component (> 1%)	(kg / %)
Steel strap	17%
Fire resistant inlay	56%
Clip set	10%
Screws	8%
PP card	7%
Glue	2%

Biogenic carbon content	Unit	Amount of uptake per functional unit
Biogenic carbon content in product	kg C	0
Biogenic carbon content in accompanying packaging	kg C	0
Note that 1 kg of biogenic carbon is equivalent to 44 / 12 kg of CO ₂ .		

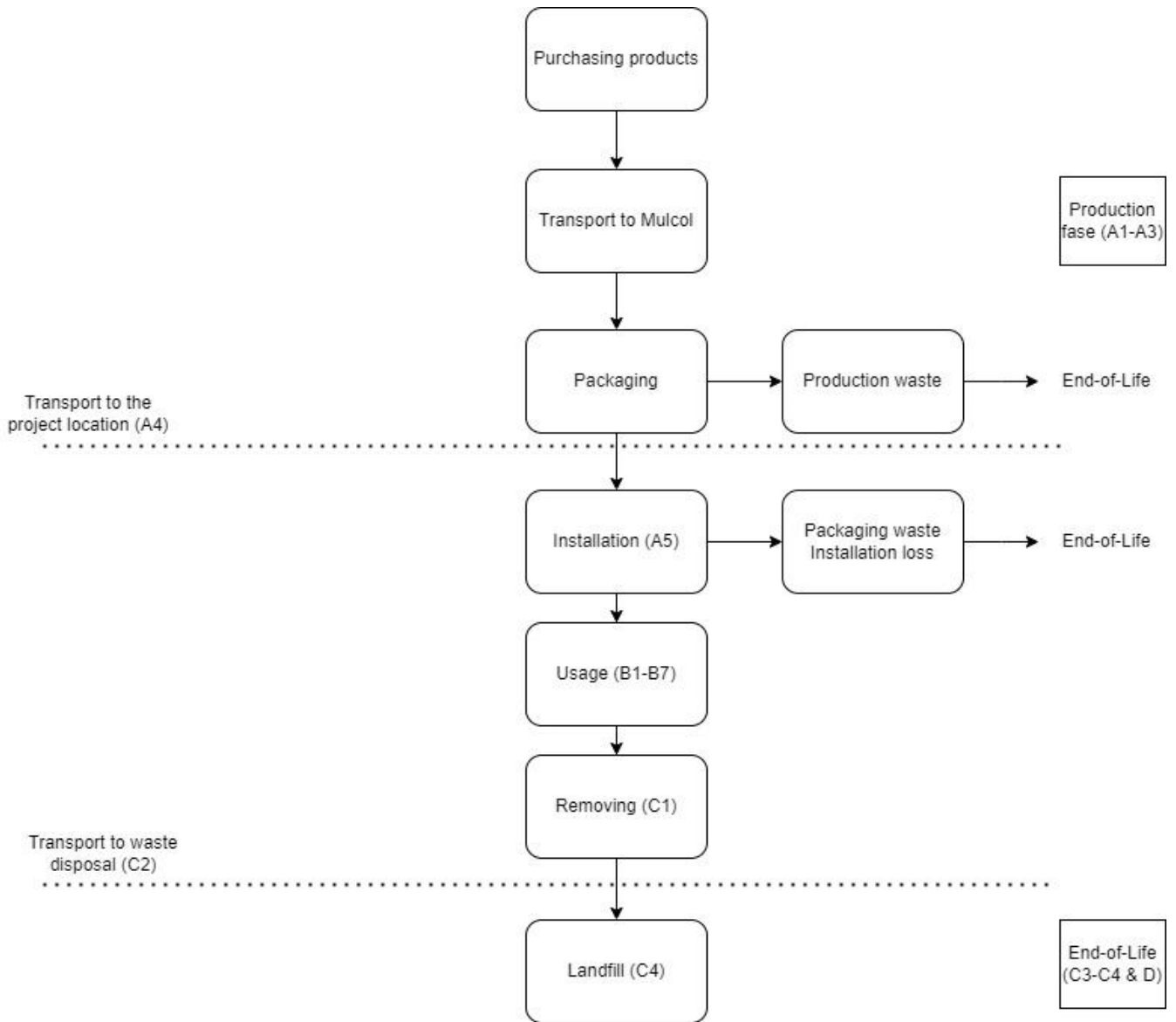
SCOPE AND TYPE

The LCA study is a cradle-to-gate (A-D) in accordance with the EN15804+A2 and the Dutch Determination method (Bepalingsmethode "Milieuprestatie Bouwwerken" versie 1.1 march 2022). The product is produced in the Netherlands and application of the results is only representable for products sold from the Oss facility. Simapro 9.5.0.0 software was used, using NMD 3.7 and Ecoinvent 3.6 databases.

PRODUCT STAGE			CONSTRUCTION PROCESS STAGE		USE STAGE							END OF LIFE STAGE				BENEFITS AND LOADS BEYOND THE SYSTEM BOUNDARIES
Raw material supply	Transport	Manufacturing	Transport gate to site	Assembly	Use	Maintenance	Repair	Replacement	Refurbishment	Operational energy use	Operational water use	De-construction demolition	Transport	Waste processing	Disposal	Reuse - Recovery - Recycling potential
A1	A2	A3	A4	A5	B1	B2	B3	B4	B5	B6	B7	C1	C2	C3	C4	D
x	x	x	x	x	x	x	x	x	x	x	x	x	x	x	x	x

X = Modules Assessed

ND = Not Declared



ENVIRONMENTAL IMPACT per functional unit or declared unit (indicators A1)

Unit	A1	A2	A3	A1-A3	A4	A5	B1	B2	B3	B4	B5	B6	B7	C1	C2	C3	C4	D
ADPE kg Sb eq.	3,80E-04	3,54E-06	0,00E+00	3,83E-04	1,14E-06	1,16E-05	0,00E+00	0,00E+00	0,00E+00	0,00E+00	0,00E+00	0,00E+00	0,00E+00	0,00E+00	8,24E-07	9,56E-07	1,10E-06	-4,16E-07
ADPF MJ	2,41E+02	3,19E+00	0,00E+00	2,44E+02	6,82E-01	7,13E+00	0,00E+00	0,00E+00	0,00E+00	0,00E+00	0,00E+00	0,00E+00	0,00E+00	0,00E+00	4,93E-01	2,33E-01	1,07E+00	-7,38E+00
GWP kg CO2 eq.	1,28E+01	2,06E-01	0,00E+00	1,30E+01	4,46E-02	3,75E-01	0,00E+00	0,00E+00	0,00E+00	0,00E+00	0,00E+00	0,00E+00	0,00E+00	0,00E+00	3,23E-02	1,70E-02	3,05E+00	-5,75E-01
ODP kg CFC11 eq.	1,48E-06	3,90E-08	0,00E+00	1,52E-06	7,91E-09	4,53E-08	0,00E+00	0,00E+00	0,00E+00	0,00E+00	0,00E+00	0,00E+00	0,00E+00	0,00E+00	5,72E-09	2,13E-09	2,83E-08	-2,00E-08
POCP kg ethene eq.	1,49E-02	1,25E-04	0,00E+00	1,50E-02	2,69E-05	4,15E-04	0,00E+00	0,00E+00	0,00E+00	0,00E+00	0,00E+00	0,00E+00	0,00E+00	0,00E+00	1,95E-05	1,50E-05	7,15E-05	-1,25E-03
AP kg SO2 eq.	7,91E-02	5,36E-04	0,00E+00	7,96E-02	1,96E-04	2,34E-03	0,00E+00	0,00E+00	0,00E+00	0,00E+00	0,00E+00	0,00E+00	0,00E+00	0,00E+00	1,42E-04	1,67E-04	1,79E-03	-1,94E-03
EP kg (PO4) 3 eq.	1,21E-02	8,82E-05	0,00E+00	1,22E-02	3,85E-05	3,61E-04	0,00E+00	0,00E+00	0,00E+00	0,00E+00	0,00E+00	0,00E+00	0,00E+00	0,00E+00	2,79E-05	2,13E-05	6,08E-04	-2,31E-04

Toxicity indicators and ECI (Dutch market)

HTP kg DCB eq.	6,52E+01	4,43E-02	0,00E+00	6,52E+01	1,88E-02	1,95E+00	0,00E+00	0,00E+00	0,00E+00	0,00E+00	0,00E+00	0,00E+00	0,00E+00	0,00E+00	1,36E-02	2,06E-02	2,03E-01	-3,59E-01
FAETP kg DCB eq.	4,41E-01	1,86E-03	0,00E+00	4,43E-01	5,48E-04	1,35E-02	0,00E+00	0,00E+00	0,00E+00	0,00E+00	0,00E+00	0,00E+00	0,00E+00	0,00E+00	3,97E-04	3,84E-04	6,39E-03	4,46E-03
MAETP kg DCB eq.	6,95E+02	5,04E+00	0,00E+00	7,00E+02	1,97E+00	2,12E+01	0,00E+00	0,00E+00	0,00E+00	0,00E+00	0,00E+00	0,00E+00	0,00E+00	0,00E+00	1,43E+00	1,67E+00	2,77E+01	3,72E+00
TETP kg DCB eq.	9,84E-02	2,50E-04	0,00E+00	9,87E-02	6,64E-05	3,87E-03	0,00E+00	0,00E+00	0,00E+00	0,00E+00	0,00E+00	0,00E+00	0,00E+00	0,00E+00	4,80E-05	6,43E-05	1,75E-04	3,00E-02
ECI euro	7,07E+00	1,83E-02	0,00E+00	7,09E+00	5,37E-03	2,11E-01	0,00E+00	0,00E+00	0,00E+00	0,00E+00	0,00E+00	0,00E+00	0,00E+00	0,00E+00	3,89E-03	3,80E-03	1,87E-01	-7,17E-02
ADPF kg Sb eq.	1,16E-01	1,54E-03	0,00E+00	1,17E-01	3,28E-04	3,43E-03	0,00E+00	0,00E+00	0,00E+00	0,00E+00	0,00E+00	0,00E+00	0,00E+00	0,00E+00	2,37E-04	1,12E-04	5,14E-04	-3,55E-03

ADPE = Abiotic Depletion Potential for non-fossil resources

ADPF = Abiotic Depletion Potential for fossil resources

GWP = Global Warming Potential

ODP = Depletion potential of the stratospheric ozone layer

POCP = Formation potential of tropospheric ozone photochemical oxidants

AP = Acidification Potential of land and water

EP = Eutrophication Potential

HTP = Human Toxicity Potential

FAETP = Fresh water aquatic ecotoxicity potential

MAETP = Marine aquatic ecotoxicity potential

TETP = Terrestrial ecotoxicity potential

ECI = Environmental Cost Indicator

ADPF = Abiotic Depletion Potential for fossil resources

ENVIRONMENTAL IMPACT per functional unit or declared unit (core indicators A2)

Unit	A1	A2	A3	A1-A3	A4	A5	B1	B2	B3	B4	B5	B6	B7	C1	C2	C3	C4	D
GWP-total kg CO2 eq.	1,34E+01	2,08E-01	0,00E+00	1,36E+01	4,50E-02	3,92E-01	0,00E+00	0,00E+00	0,00E+00	0,00E+00	0,00E+00	0,00E+00	0,00E+00	0,00E+00	3,26E-02	1,62E-02	3,06E+00	-6,16E-01
GWP-fossil kg CO2 eq.	1,33E+01	2,08E-01	0,00E+00	1,35E+01	4,50E-02	3,88E-01	0,00E+00	0,00E+00	0,00E+00	0,00E+00	0,00E+00	0,00E+00	0,00E+00	0,00E+00	3,25E-02	1,72E-02	3,06E+00	-6,16E-01
GWP-biogenic kg CO2 eq.	1,24E-01	1,00E-04	0,00E+00	1,24E-01	2,08E-05	3,70E-03	0,00E+00	0,00E+00	0,00E+00	0,00E+00	0,00E+00	0,00E+00	0,00E+00	0,00E+00	1,50E-05	-9,87E-04	2,69E-04	0,00E+00
GWP-luluc kg CO2 eq.	8,47E-03	5,17E-05	0,00E+00	8,52E-03	1,65E-05	2,70E-04	0,00E+00	0,00E+00	0,00E+00	0,00E+00	0,00E+00	0,00E+00	0,00E+00	0,00E+00	1,19E-05	1,93E-05	6,63E-05	4,55E-04
ODP kg CFC11 eq.	1,49E-06	4,90E-08	0,00E+00	1,54E-06	9,93E-09	4,63E-08	0,00E+00	0,00E+00	0,00E+00	0,00E+00	0,00E+00	0,00E+00	0,00E+00	0,00E+00	7,18E-09	2,47E-09	2,87E-08	-1,50E-08
AP mol H+ eq.	9,51E-02	6,67E-04	0,00E+00	9,57E-02	2,61E-04	2,82E-03	0,00E+00	0,00E+00	0,00E+00	0,00E+00	0,00E+00	0,00E+00	0,00E+00	0,00E+00	1,89E-04	2,09E-04	2,63E-03	-2,38E-03
EP-fresh water kg P eq.	8,17E-04	1,45E-06	0,00E+00	8,19E-04	4,54E-07	2,40E-05	0,00E+00	0,00E+00	0,00E+00	0,00E+00	0,00E+00	0,00E+00	0,00E+00	0,00E+00	3,28E-07	1,17E-06	2,63E-06	-2,18E-05
EP-marine kg N eq.	1,81E-02	1,53E-04	0,00E+00	1,82E-02	9,19E-05	5,39E-04	0,00E+00	0,00E+00	0,00E+00	0,00E+00	0,00E+00	0,00E+00	0,00E+00	0,00E+00	6,65E-05	4,60E-05	1,38E-03	-4,41E-04
EP-terrestrial mol N eq.	1,60E-01	1,72E-03	0,00E+00	1,61E-01	1,01E-03	4,74E-03	0,00E+00	0,00E+00	0,00E+00	0,00E+00	0,00E+00	0,00E+00	0,00E+00	0,00E+00	7,33E-04	5,34E-04	1,36E-02	-5,15E-03
POCP kg NMVOC eq.	5,85E-02	6,46E-04	0,00E+00	5,92E-02	2,89E-04	1,69E-03	0,00E+00	0,00E+00	0,00E+00	0,00E+00	0,00E+00	0,00E+00	0,00E+00	0,00E+00	2,09E-04	1,46E-04	3,10E-03	-3,50E-03
ADP-minerals & metals kg Sb eq.	3,80E-04	3,54E-06	0,00E+00	3,83E-04	1,14E-06	1,16E-05	0,00E+00	0,00E+00	0,00E+00	0,00E+00	0,00E+00	0,00E+00	0,00E+00	0,00E+00	8,24E-07	9,56E-07	1,10E-06	-4,16E-07
ADP-fossil MJ, net calorific value	2,28E+02	3,23E+00	0,00E+00	2,32E+02	6,78E-01	6,86E+00	0,00E+00	0,00E+00	0,00E+00	0,00E+00	0,00E+00	0,00E+00	0,00E+00	0,00E+00	4,91E-01	2,39E-01	9,63E-01	-4,30E+00
WDP m3 world eq. Deprived	7,63E+00	1,37E-02	0,00E+00	7,64E+00	2,43E-03	2,26E-01	0,00E+00	0,00E+00	0,00E+00	0,00E+00	0,00E+00	0,00E+00	0,00E+00	0,00E+00	1,76E-03	2,40E-03	5,31E-02	-1,17E-01

- GWP-total = Global Warming Potential total
- GWP-fossil = Global Warming Potential fossil fuels
- GWP-biogenic = Global Warming Potential biogenic total
- GWP-luluc = Global Warming Potential land use and land use change
- ODP = Depletion potential of the stratospheric ozone layer
- AP = Acidification Potential, Accumulated Exceedence
- EP-freshwater = Eutrophication Potential, fraction of nutrients reaching freshwater end compartment
- EP-marine = Eutrophication Potential, fraction of nutrients reaching marine end compartment
- EP-terrestrial = Eutrophication Potential, Accumulated Exceedence
- POCP = Formation potential of tropospheric ozone photochemical oxidants
- ADP-minerals & metals = Abiotic Depletion Potential for non-fossil resources [1]
- ADP-fossil = Abiotic Depletion for fossil resources potential [1]
- WDP = Water (user) deprivation potential, deprivation-weighted water consumption [1]

Disclaimer [1]:

- The results of this environmental impact indicator shall be used with care as the uncertainties on these results are high or as there is limited experience with the indicator.

ENVIRONMENTAL IMPACT per functional unit or declared unit (additional indicators A2)

Unit	A1	A2	A3	A1-A3	A4	A5	B1	B2	B3	B4	B5	B6	B7	C1	C2	C3	C4	D
PM Disease incidence	9,29E-07	1,44E-08	0,00E+00	9,43E-07	4,04E-09	2,75E-08	0,00E+00	0,00E+00	0,00E+00	0,00E+00	0,00E+00	0,00E+00	0,00E+00	0,00E+00	2,92E-09	2,62E-09	1,03E-08	-3,56E-08
IRP kBq U235 eq.	4,74E-01	1,38E-02	0,00E+00	4,88E-01	2,84E-03	1,51E-02	0,00E+00	0,00E+00	0,00E+00	0,00E+00	0,00E+00	0,00E+00	0,00E+00	0,00E+00	2,06E-03	1,19E-03	3,01E-03	1,05E-02
ETP-fw CTUe	9,13E+02	2,35E+00	0,00E+00	9,15E+02	6,05E-01	2,69E+01	0,00E+00	0,00E+00	0,00E+00	0,00E+00	0,00E+00	0,00E+00	0,00E+00	0,00E+00	4,38E-01	1,03E+00	1,07E+01	-2,07E+01
HTP-c CTUh	1,48E-07	5,95E-11	0,00E+00	1,48E-07	1,96E-11	4,44E-09	0,00E+00	0,00E+00	0,00E+00	0,00E+00	0,00E+00	0,00E+00	0,00E+00	0,00E+00	1,42E-11	2,50E-11	6,08E-10	-7,88E-11
HTP-nc CTUh	1,22E-06	1,90E-09	0,00E+00	1,22E-06	6,61E-10	4,02E-08	0,00E+00	0,00E+00	0,00E+00	0,00E+00	0,00E+00	0,00E+00	0,00E+00	0,00E+00	4,79E-10	1,19E-09	6,52E-09	1,19E-07
SQP -	4,77E+01	3,69E+00	0,00E+00	5,14E+01	5,88E-01	1,55E+00	0,00E+00	0,00E+00	0,00E+00	0,00E+00	0,00E+00	0,00E+00	0,00E+00	0,00E+00	4,26E-01	4,80E-01	2,51E-01	-9,51E-01

- PM = Potential incidence of disease due to PM emissions
- IRP = Potential Human exposure efficiency relative to U235 [1]
- ETP-fw = Potential Comparative Toxic Unit for ecosystems [2]
- HTP-c = Potential Comparative Toxic Unit for humans, cancer [2]
- HTP-nc = Potential Comparative Toxic Unit for humans, non-cancer [2]
- SQP = Potential soil quality index [2]

Disclaimer [1]:

- This impact category deals mainly with the eventual impact of low dose ionizing radiation on human health of the nuclear fuel cycle. It does not consider effects due to possible nuclear accidents, occupational exposure nor due to radioactive waste.

Disclaimer [2]:

- The results of this environmental impact indicator shall be used with care as the uncertainties on these results are high or as there is limited experience with the indicator.

OUTPUT FLOWS AND WASTE CATEGORIES per functional unit or declared unit (A1 en A2)

	Unit	A1	A2	A3	A1-A3	A4	A5	B1	B2	B3	B4	B5	B6	B7	C1	C2	C3	C4	D
HWD	kg	1,22E-02	7,97E-06	0,00E+00	1,22E-02	1,72E-06	3,64E-04	0,00E+00	0,00E+00	0,00E+00	0,00E+00	0,00E+00	0,00E+00	0,00E+00	0,00E+00	1,24E-06	7,20E-07	2,74E-06	-7,39E-05
NHWD	kg	4,99E+00	2,80E-01	0,00E+00	5,27E+00	4,30E-02	1,59E-01	0,00E+00	0,00E+00	0,00E+00	0,00E+00	0,00E+00	0,00E+00	0,00E+00	0,00E+00	3,11E-02	6,97E-03	6,08E-02	-6,03E-02
RWD	kg	4,47E-04	2,19E-05	0,00E+00	4,69E-04	4,45E-06	1,44E-05	0,00E+00	0,00E+00	0,00E+00	0,00E+00	0,00E+00	0,00E+00	0,00E+00	0,00E+00	3,22E-06	1,41E-06	2,86E-06	3,65E-06
CRU	kg	0,00E+00	0,00E+00	0,00E+00	0,00E+00	0,00E+00	0,00E+00	0,00E+00	0,00E+00	0,00E+00	0,00E+00	0,00E+00	0,00E+00	0,00E+00	0,00E+00	0,00E+00	0,00E+00	0,00E+00	0,00E+00
MFR	kg	0,00E+00	0,00E+00	0,00E+00	0,00E+00	0,00E+00	0,00E+00	0,00E+00	0,00E+00	0,00E+00	0,00E+00	0,00E+00	0,00E+00	0,00E+00	0,00E+00	0,00E+00	0,00E+00	0,00E+00	0,00E+00
MER	kg	0,00E+00	0,00E+00	0,00E+00	0,00E+00	0,00E+00	0,00E+00	0,00E+00	0,00E+00	0,00E+00	0,00E+00	0,00E+00	0,00E+00	0,00E+00	0,00E+00	0,00E+00	0,00E+00	0,00E+00	0,00E+00
EEE	MJ	0,00E+00	0,00E+00	0,00E+00	0,00E+00	0,00E+00	0,00E+00	0,00E+00	0,00E+00	0,00E+00	0,00E+00	0,00E+00	0,00E+00	0,00E+00	0,00E+00	0,00E+00	0,00E+00	0,00E+00	0,00E+00
ETE	MJ	0,00E+00	0,00E+00	0,00E+00	0,00E+00	0,00E+00	0,00E+00	0,00E+00	0,00E+00	0,00E+00	0,00E+00	0,00E+00	0,00E+00	0,00E+00	0,00E+00	0,00E+00	0,00E+00	0,00E+00	0,00E+00

- HWD = Hazardous Waste Disposed
- NHWD = Non Hazardous Waste Disposed
- RWD = Radioactive Waste Disposed
- CRU = Components for reuse
- MFR = Materials for recycling
- MER = Materials for energy recovery
- EEE = Exported Electrical Energy
- ETE = Exported Thermal Energy

RESOURCE USE per functional unit or declared unit (A1 and A2)

	Unit	A1	A2	A3	A1-A3	A4	A5	B1	B2	B3	B4	B5	B6	B7	C1	C2	C3	C4	D
PERE	MJ	0,00E+00	0,00E+00	0,00E+00	0,00E+00	0,00E+00	0,00E+00	0,00E+00	0,00E+00	0,00E+00	0,00E+00	0,00E+00	0,00E+00	0,00E+00	0,00E+00	0,00E+00	0,00E+00	0,00E+00	0,00E+00
PERM	MJ	0,00E+00	0,00E+00	0,00E+00	0,00E+00	0,00E+00	0,00E+00	0,00E+00	0,00E+00	0,00E+00	0,00E+00	0,00E+00	0,00E+00	0,00E+00	0,00E+00	0,00E+00	0,00E+00	0,00E+00	0,00E+00
PERT	MJ	2,06E+01	3,31E-02	0,00E+00	2,07E+01	8,49E-03	6,25E-01	0,00E+00	0,00E+00	0,00E+00	0,00E+00	0,00E+00	0,00E+00	0,00E+00	0,00E+00	6,14E-03	3,74E-02	6,80E-02	1,25E-01
PENRE	MJ	0,00E+00	0,00E+00	0,00E+00	0,00E+00	0,00E+00	0,00E+00	0,00E+00	0,00E+00	0,00E+00	0,00E+00	0,00E+00	0,00E+00	0,00E+00	0,00E+00	0,00E+00	0,00E+00	0,00E+00	0,00E+00
PENRM	MJ	0,00E+00	0,00E+00	0,00E+00	0,00E+00	0,00E+00	0,00E+00	0,00E+00	0,00E+00	0,00E+00	0,00E+00	0,00E+00	0,00E+00	0,00E+00	0,00E+00	0,00E+00	0,00E+00	0,00E+00	0,00E+00
PENRT	MJ	2,44E+02	3,43E+00	0,00E+00	2,48E+02	7,20E-01	7,33E+00	0,00E+00	0,00E+00	0,00E+00	0,00E+00	0,00E+00	0,00E+00	0,00E+00	0,00E+00	5,21E-01	2,53E-01	1,03E+00	-4,47E+00
SM	kg	0,00E+00	0,00E+00	0,00E+00	0,00E+00	0,00E+00	0,00E+00	0,00E+00	0,00E+00	0,00E+00	0,00E+00	0,00E+00	0,00E+00	0,00E+00	0,00E+00	0,00E+00	0,00E+00	0,00E+00	0,00E+00
RSF	MJ	0,00E+00	0,00E+00	0,00E+00	0,00E+00	0,00E+00	0,00E+00	0,00E+00	0,00E+00	0,00E+00	0,00E+00	0,00E+00	0,00E+00	0,00E+00	0,00E+00	0,00E+00	0,00E+00	0,00E+00	0,00E+00
NSRF	MJ	0,00E+00	0,00E+00	0,00E+00	0,00E+00	0,00E+00	0,00E+00	0,00E+00	0,00E+00	0,00E+00	0,00E+00	0,00E+00	0,00E+00	0,00E+00	0,00E+00	0,00E+00	0,00E+00	0,00E+00	0,00E+00
FW	m3	2,04E-01	4,12E-04	0,00E+00	2,04E-01	8,26E-05	6,06E-03	0,00E+00	0,00E+00	0,00E+00	0,00E+00	0,00E+00	0,00E+00	0,00E+00	0,00E+00	5,98E-05	1,13E-04	1,88E-03	-2,23E-03

- PERE = Use of renewable primary energy excluding renewable primary energy used as raw materials
- PERM = Use of renewable primary energy resources used as raw materials
- PERT = Total use of renewable primary energy resources
- PENRE = Use of non-renewable primary energy resources excluding non-renewable energy resources used as raw materials
- PENRM = Use of non-renewable primary energy resources used as raw materials
- PENRT = Total use of non-renewable primary energy resources
- SM = Use of secondary materials
- RSF = Use of renewable secondary fuels
- NSRF = Use of non-renewable secondary fuels
- FW = Use of net fresh water

CALCULATION RULES

Energy and resource usage of the production facilities have been mass allocated based on data from 2023. A full calendar year of production data was used.

The resulting averages were calculated by aggregating the total energy and resource usage over the year and dividing by the number of production units or time periods. Capital goods, such as factory infrastructure, were excluded from this analysis to focus on operational energy and resource usage.

SCENARIOS AND ADDITIONAL TECHNICAL INFORMATION

At the end of their useful life, the products are transported (C2) to waste processing for landfilling, incineration and recycling (C2–C4). The stainless steel fraction goes 90% to recycling, 5% to incineration and 5% to landfill, while the PUR fraction is sent 100% to incineration. The transport distance to waste treatment is calculated in accordance with the NMD Assessment Method. Benefits from recycling and incineration are presented in module D.

Electricity Mix – Global Warming Potential (GWP):

The NMD profile 0510-pro&Elektriciteitsverbruik, bouwmaschine elektrisch, Grijze mix, per kWh input (electricity: 3.6 MJ/kWh; 3.6 MJ input equals 2.75 MJ output) was applied. This grey electricity mix is composed of the following energy sources: natural gas (81.25%), coal (10.93%), nuclear energy (4.42%), oil products (1.51%), and other non-renewable fuels (approximately 1.89%). The Global Warming Potential associated with this electricity mix is 6.23×10^{-1} kg CO₂-equivalent per kWh.

DECLARATION OF SVHC

Analysis show no SVHC present in the product.

REFERENCES

- CE Delft. (2010). Handboek Schaduwrijzen. Opgehaald van <https://ce.nl/publicaties/handboekschaduwrijzen-waardering-en-weging-van-emissies-en-milieueffecten/>
- ISO. (2006). 'ISO 14025: Environmental labels and declarations -- Type III environmental declarations -- Principles and procedures', International Organization for Standardization, ISO14025:2006.
- ISO. (2006). 'ISO 14040: Environmental management - Life cycle assessment – Principles and Framework', International Organization for Standardization, ISO14040:2006.
- ISO. (2006). 'ISO 14044: Environmental management - Life cycle assessment - Requirements and guidelines', International Organization for Standardization, ISO14044:2006.
- NEN. (2013). 'NEN-EN 15804: Duurzaamheid van bouwwerken - Milieuverklaringen van producten - Basisregels voor de productgroep bouwproducten', NEN-EN 15804:2012+A1:2013.
- NMD. (2022). Bepalingsmethode 'Milieuprestatie Bouwwerken' versie 1.1 inclusief de bijbehorende wijzigingsbladen.
- NMD. (2022, March). Environmental Performance Assessment Method for Construction Works. Opgehaald van https://milieudatabase.nl/wpcontent/uploads/2022/05/Bepalingsmethode_Milieuprestatie_Bouwwerken_maart_2022_Engels.pdf
- TNO. (sd). Toxiciteit heeft z'n prijs : schaduwrijzen voor (eco-)toxiciteit en uitputting van abiotische grondstoffen binnen DuboCalc. Opgehaald van https://puc.overheid.nl/rijkswaterstaat/doc/PUC_119145_31/